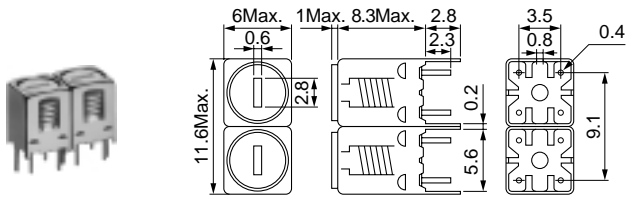


### 5HW Double Tuned 5HT Triple Tuned

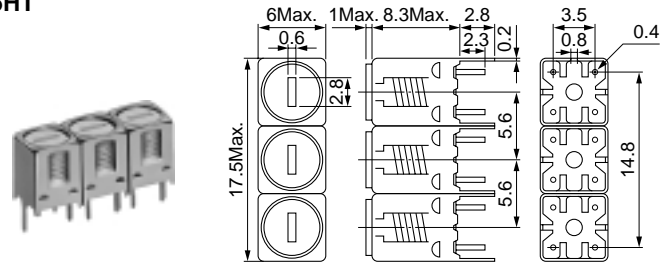
Frequency Range: 5HW, 5HT 350~1500MHz  
5HRW, 5HRT 350-1500MHz

#### 5HW



(Unit: mm)

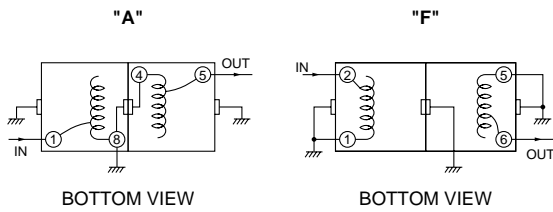
#### 5HT



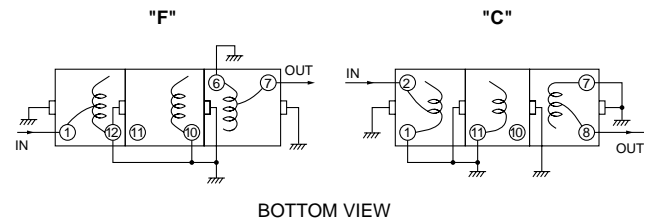
(Unit: mm)

### Connections 接続図

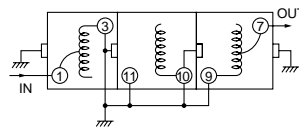
#### 5HW



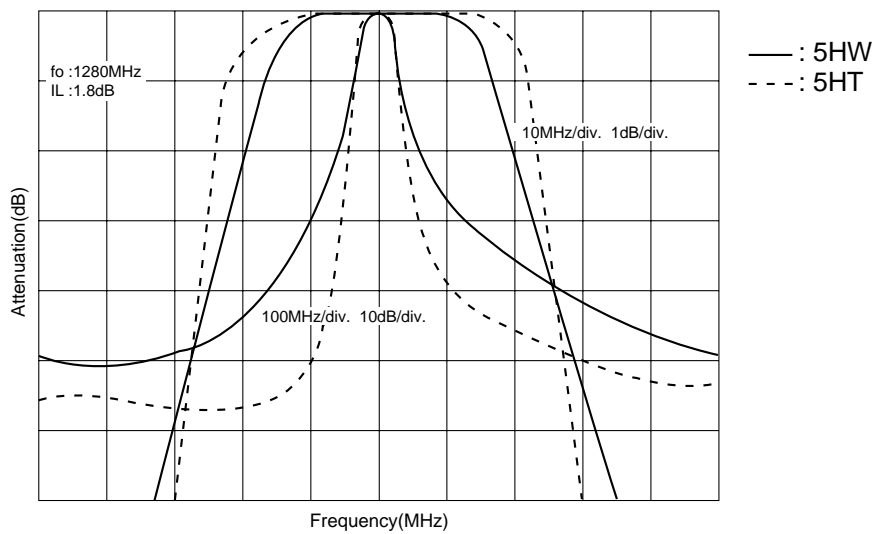
#### 5HT



#### "AS"



### Typical characteristics 特性曲線



continued from previous page  
前頁より続く

SELECTION GUIDE FOR STANDARD FILTERS

TYPE 5HW (Double tuned)

東光品番	中心周波数	帯域幅	選択度		リップル	挿入損失
TOKO Part Number	Center Frequency (MHz)	Bandwidth (-1dB) (MHz) min.	Fo - ( ) MHz (dB) min.	Fo + ( ) MHz (dB) min.	Ripple (dB) max.	Insertion Loss (dB) max.
5HW-35045A-365	365	6.0	25(50)	20(50)	1.0	4.5
5HW-36535A-380	380	7.0	25(50)	20(50)	1.0	4.5
5HW-39545A-425	425	7.0	25(50)	20(50)	1.0	4.5
5HW-40545A-430	430	7.0	25(50)	20(50)	1.0	4.5
5HW-44545A-475	475	8.0	22(50)	18(50)	1.0	4.5
5HW-47535A-505	505	10.0	20(50)	16(50)	1.0	4.5
5HW-51035A-530	530	10.0	20(50)	16(50)	1.0	4.5
5HW-52535A-545	545	10.0	20(50)	16(50)	1.0	4.5
5HW-58080A-625	625	10.0	18(50)	15(50)	1.0	4.5
5HW-65535A-670	670	14.0	26(100)	23(100)	1.0	3.5
5HW-94555A-959	959	18.0	20(100)	17(100)	1.0	3.5
5HW-100090A-1010	1010	16.0	18(100)	14(100)	1.0	3.5
5HW-109060A-1130	1130	18.0	16(100)	14(100)	1.0	3.5
5HW-115045F-1195	1195	24.0	20(100)	18(100)	1.0	3.5
5HW-120050F-1225	1225	18.0	24(100)	20(100)	1.0	3.5
5HW-125055F-1305	1305	25.0	20(100)	18(100)	1.0	3.5

TYPE 5HT (Triple tuned)

東光品番	中心周波数	帯域幅	選択度		リップル	挿入損失
TOKO Part Number	Center Frequency (MHz)	Bandwidth (-1dB) (MHz) min.	Fo - 50MHz (dB) min.	Fo + 50MHz (dB) min.	Ripple (dB) max.	Insertion Loss (dB) max.
5HT-36020AS-360	360	16.0	33	25	1.0	4.0
5HT-38020AS-380	380	16.0	28	24	1.0	4.0
5HT-40020AS-400	400	11.0	34	31	1.0	4.0
5HT-42020AS-420	420	13.0	32	27	1.0	4.0
5HT-44020AS-440	440	14.0	28	25	1.0	4.0
5HT-46020AS-460	460	14.0	28	23	1.0	4.0
5HT-48030AS-480	480	14.0	26	22	1.0	4.0
5HT-49520AS-495	495	15.0	26	22	1.0	4.0
5HT-51535AS-515	515	16.0	25	20	1.0	4.0
5HT-52070AS-520	520	9.0	25	22	1.0	4.0
5HT-59065F-590	590	12.0	34	25	1.0	4.5
5HT-63540F-635	635	12.0	30	26	1.0	4.0
5HT-65550F-655	655	12.0	30	26	1.0	4.0
5HT-70530F-705	705	15.0	30	26	1.0	4.0
5HT-73565F-735	735	15.0	28	24	1.0	4.0
5HT-80030F-800	800	15.0	28	24	1.0	4.0
5HT-83050F-830	830	15.0	26	22	1.0	4.0
5HT-88065F-880	880	15.0	24	20	1.0	4.0
5HT-94535F-945	945	15.0	22	18	1.0	4.0
5HT-98030F-980	980	15.0	22	18	1.0	4.0
5HT-101045F-1010	1010	15.0	18	14	1.0	4.0
5HT-105535F-1055	1055	15.0	18	14	1.0	4.0
5HT-109065F-1090	1090	15.0	17	15	1.0	4.0
5HT-112570C-1125	1125	15.0	20	18	1.0	4.5
5HT-123080C-1230	1230	15.0	20	16	1.0	4.5

• How to read TOKO Component Numbers (5HW/5HT/7HW/7HT)

Example:

5HW-350 45A-365

② Lowest usable frequency

③ Usable frequency range

④ Adjustable frequency

\*Maximum usable frequency is

⑤+⑥=350+45=395MHz

• 東光品番の読み方 (5HW / 5HT / 7HW / 7HT)

(例)

5HW-350 45A-365

② : 使用可能な最小周波数

③ : 使用周波数可能範囲

④ : 調整周波数

\*最大使用可能周波数は、

⑤+⑥となる

350+45=395MHz