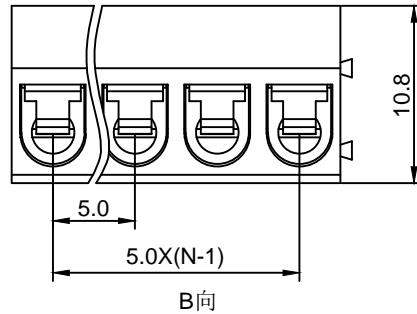


ADAMTECH EBJ-04-C alternative  
Part No: BCE332K-5.0-04P-12-00AH

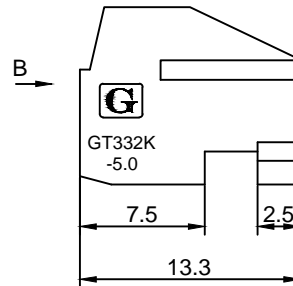
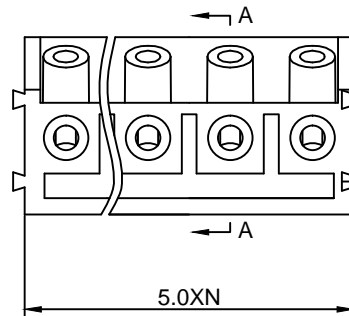
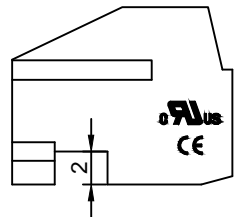


**Material :**

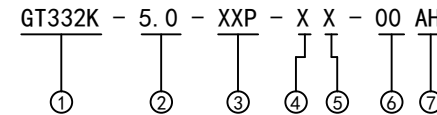
- (a) Housing : PBT(UL94V-0)
- (b) Screws : Steel , Cr<sup>3+</sup>Zn Plated
- (c) Contact : Phosphor Bronze
- (d) Cage : Brass , Ni Plated

**Electrical :**

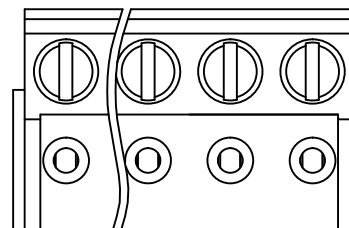
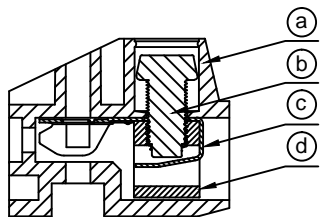
- |                              |                  |                        |
|------------------------------|------------------|------------------------|
|                              | UL               | IEC                    |
| 1.Rated Voltage :            | 300V             | 250V                   |
| 2.Rated Current :            | 10A              | 12A                    |
| 3.Torque Value :             | M2.5 , 3.54Lb.in | M2.5 , 0.4N.m          |
| 4.Wire Range:                | 28-16AWG         | 0.2-1.5mm <sup>2</sup> |
| 5.Stripping Length :         | 5-6mm            |                        |
| 6.Withstanding Voltage :     | AC2000V/1Min.    |                        |
| 7.Operating Temperature :    | -30 °C~+120 °C   |                        |
| 8.RoHS Compliance            |                  |                        |
| 9.Safety Approval :          | UL               |                        |
| 10.Undimensioned Tolerances: |                  |                        |



Pitch Range In mm			Nominal Dimension Range In mm				0.05/10	0.1°
≤6	6 ~ 10	10 ~ 24	≤30	30 ~ 60	60 ~ 100	100 ~ 150		
±0.10	±0.15	±0.25	±0.20	±0.30	±0.50	±0.70	±1.00	±0.1°



- ① Series No.
- ② Pitch
- ③ Poles  
02 02Contacts  
03 03Contacts  
...  
24 24Contacts
- ④ 1 Single Pitch  
2 Double Pitch
- ⑤ Color: 1 Grey  
2 Blue(Standard For AH)  
3 Black  
4 Green  
5 Orange  
6 Red  
7 Transparent  
8 Yellow  
9 White
- ⑥ Customer Request : 00--Standard
- ⑦ AH--Standard(PBT)



A-A

Alternatives by: BEC Distribution Limited

DETACHED LISTS	APPD: MA_8/17/16 '	PART NO. BCE332K-5.0-04P-12-00AH	REV	1	
	CHKD: Yu_8/16/16 '			SHEET	1/1
	DRFT: Chen_8/15/16 '	DRAWING NO.	DO NOT SCALE DRAWING	SCALE	1/1
	THIRD ANGLE PROJECTION			MM (INCH)	