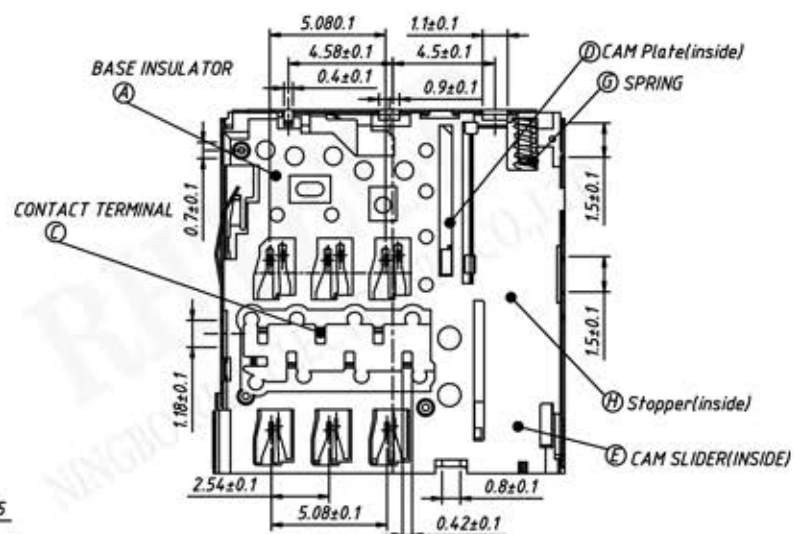
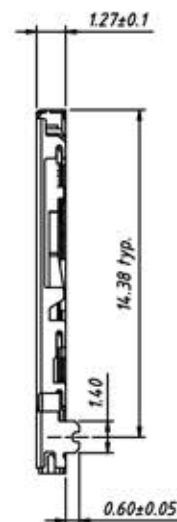
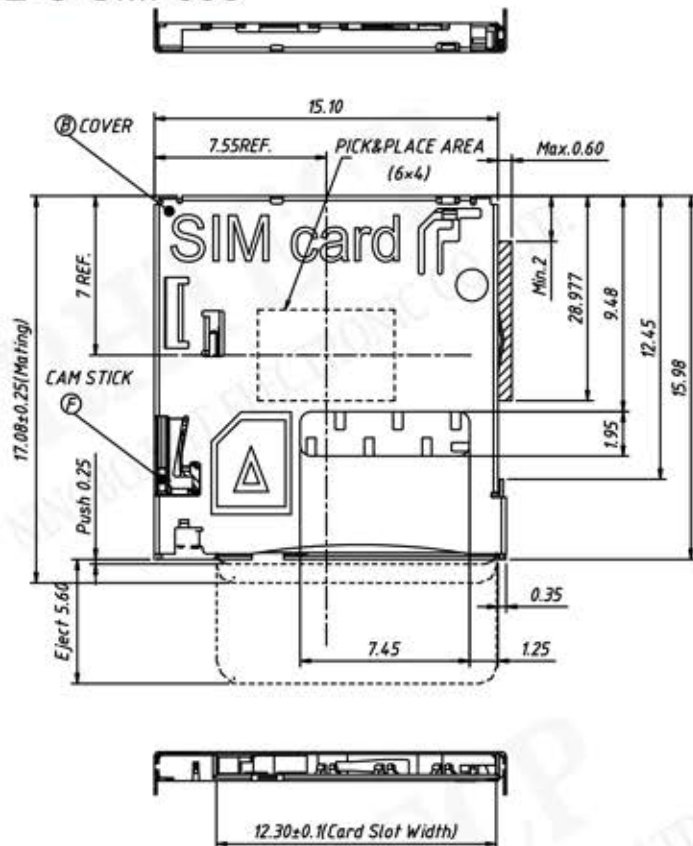
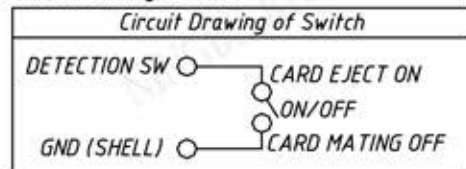


P/N: RE-C-SIM-098



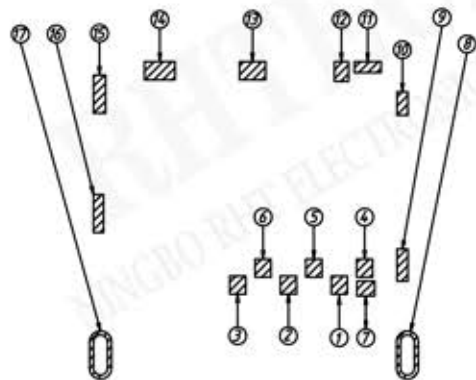
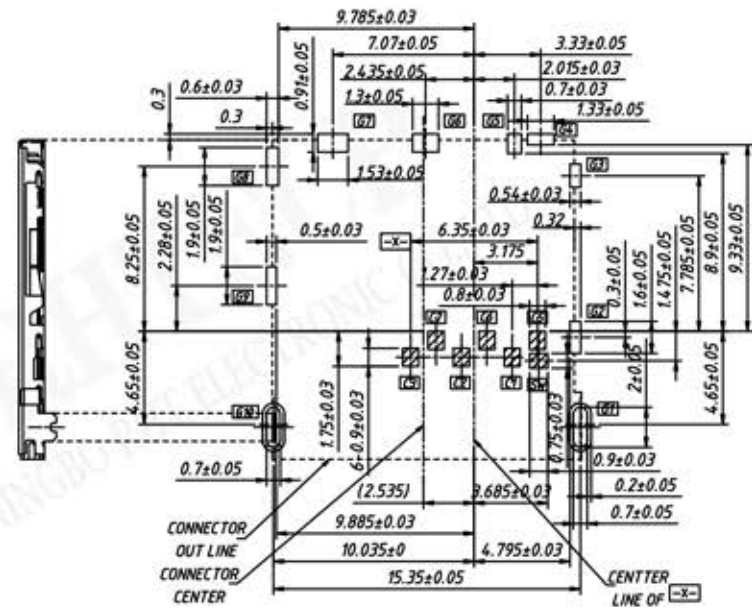
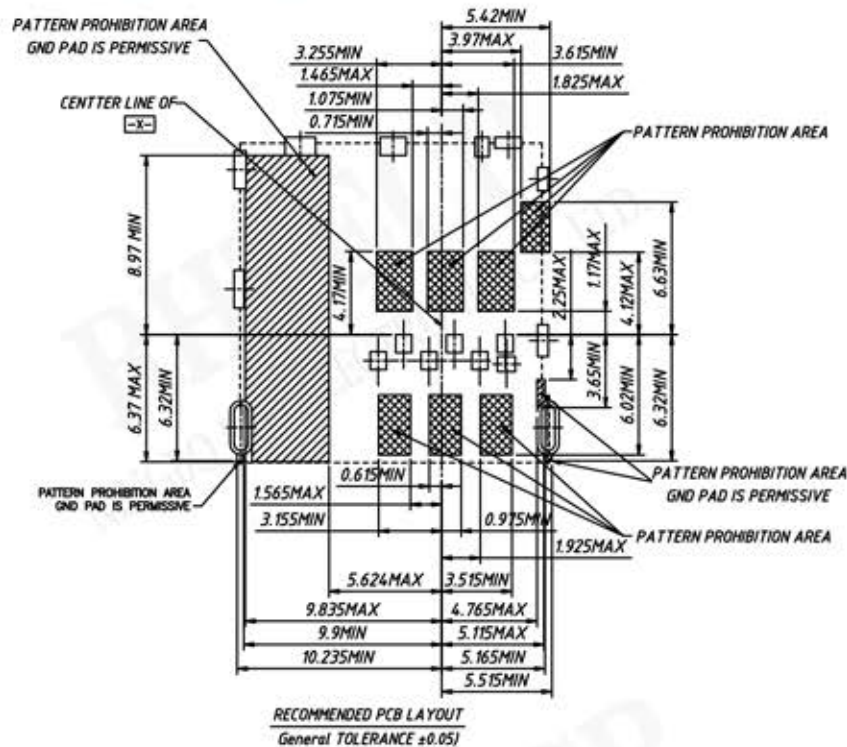
**NOTE**

1. LEAD Co-planarity: Max 0.08mm
2. No rust, contamination, damage nor deformation effecting on function
3. Switch moving area
4. Non-cumulative tolerance
5. Circuit Drawing of switch



**Material:**

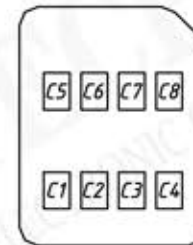
- A: Base Insulator: LCP, Black.
- B: Cover: Stainless, Not hold down: Nickel; Hold down: Au flash over Nickel.
- C: Contact Terminal: Copper Alloy, Au over Nickel
- D: CAM Plate: Copper Alloy, Nickel.
- E: CAM Slider: LCP, Black.
- F: CAM Stick: Stainless
- G: Spring: Stainless
- H: Stopper: Stainless



Connector Pin Assignments

No.	Pin name	Description
①	C1	Vcc of SIM
②	C2	RST of SIM
③	C3	CLK of SIM
④	C5	GND of SIM
⑤	C6	Vpp of SIM
⑥	C7	I/O of SIM
⑦	SW	Detection Switch
⑧~⑰	GND	Shell Ground

SIM CARD PAD LAYOUT



SIM Card Pin Assignment

Pin No.	Name
C1	VCC
C2	RST
C3	CLK
C4	Reserved
C5	GND
C6	VPP
C7	I / O
C8	Reserved