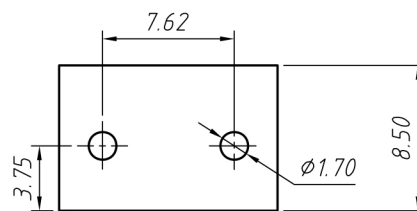


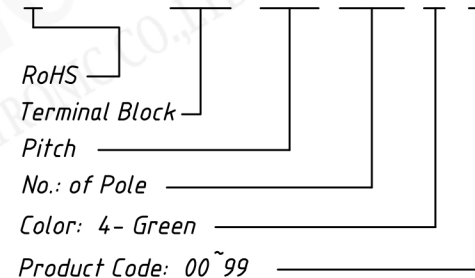
SECTION A-A

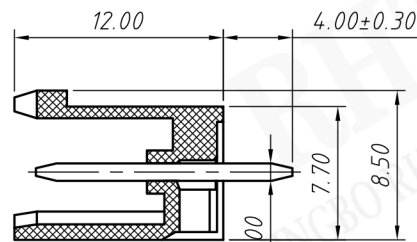
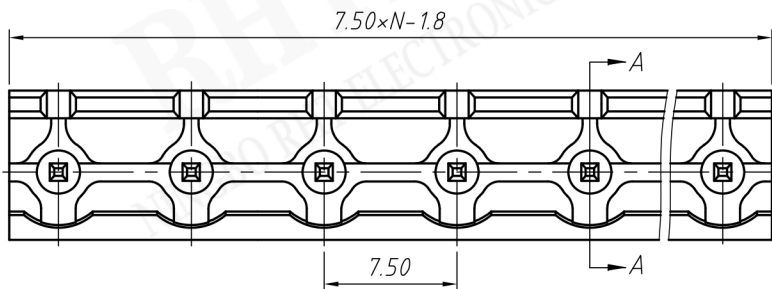


Material
Housing: PA66, UL94V-0
Pin header: Brass, Tin plated
Nut: M2.5 Brass
Electrical
Rated voltage: 300V
Rated current: 15A
Contact Resistance: 20 mΩ
Insulation resistance: 500MΩ/DC500V
Withstand voltage: AC2000V / 1 min
Mechanical
Temp. Range: -40 °C ~ +105 °C

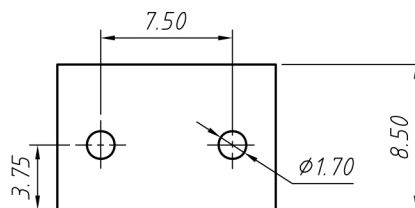
Order Information

RE - C - EDV - 7.62 - XXP - 4 00





SECTION A-A



Material

Housing: PA66, UL94V-0

Pin header: Brass, Tin plated

Nut: M2.5 Brass

Electrical

Rated voltage: 300V

Rated current: 15A

Contact Resistance: 20 mΩ

Insulation resistance: 500MΩ/DC500V

Withstand voltage: AC2000V / 1 min

Mechanical

Temp. Range: -40 °C ~ +105 °C

Order Information

RE - C - EDV - 7.50 - XXP - 4 00

RoHS

Terminal Block

Pitch

No.: of Pole

Color: 4 - Green

Product Code: 00 ~ 99