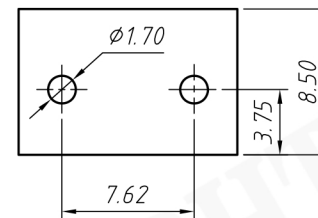


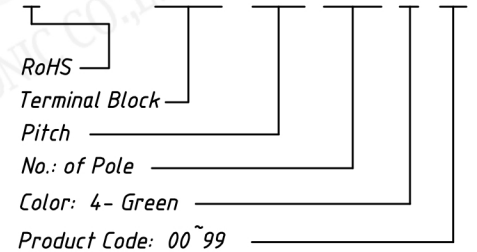
SECTION A-A

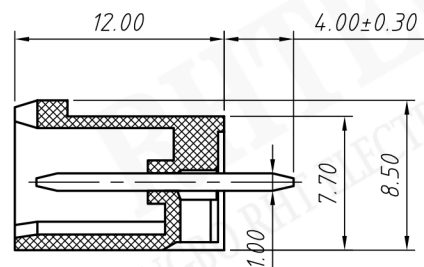
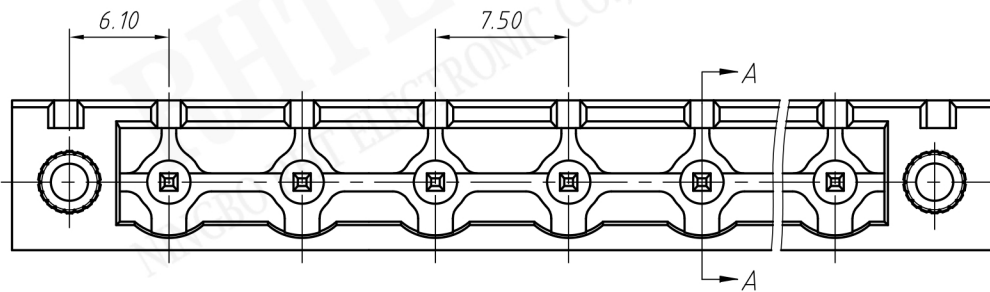


- Material**
- Housing: PA66, UL94V-0
 - Pin header: Brass, Tin plated
 - Nut: M2.5 Brass
- Electrical**
- Rated voltage: 300V
 - Rated current: 15A
 - Contact Resistance: 20 mΩ
 - Insulation resistance: 500MΩ/DC500V
 - Withstand voltage: AC2000V / 1 min
- Mechanical**
- Temp. Range: -40 °C ~ +105 °C

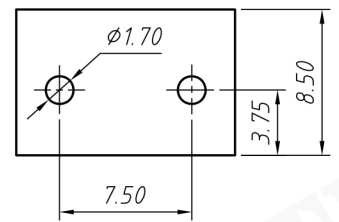
Order Information

RE - C - EDVY - 7.62 - XXP - 4 00



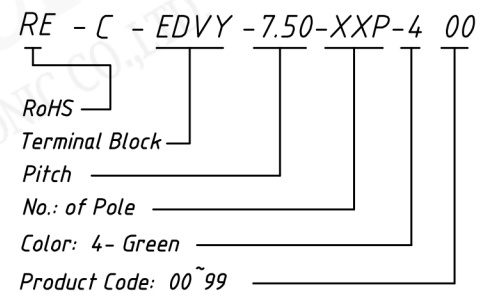


SECTION A-A



- Material**
- Housing:** PA66, UL94V-0
- Pin header:** Brass, Tin plated
- Nut:** M2.5 Brass
- Electrical**
- Rated voltage:** 300V
- Rated current:** 15A
- Contact Resistance:** 20 mΩ
- Insulation resistance:** 500MΩ/DC500V
- Withstand voltage:** AC2000V / 1 min
- Mechanical**
- Temp. Range:** -40 °C ~ +105 °C

Order Information



UNITS:mm		SHEET SIZE:A4		SCALE: ---	
> 0~ 3	> 3~ 18	> 18~ 50	> 50~ 120		
± 0.12	± 0.15	± 0.3	± 0.5		

