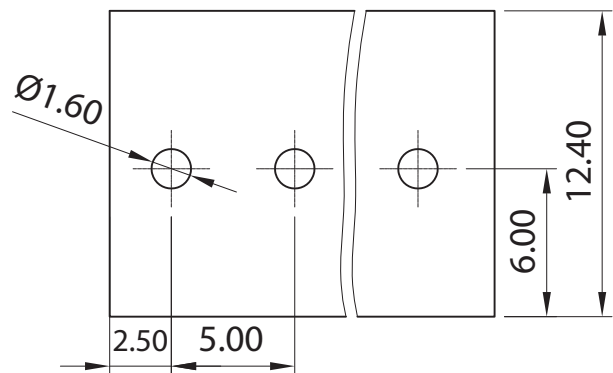
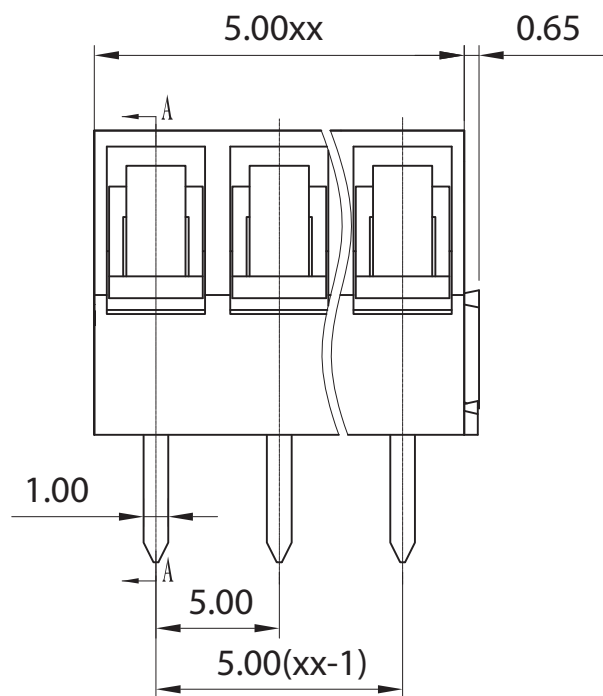
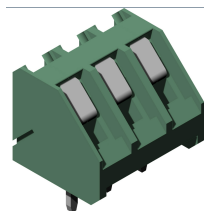
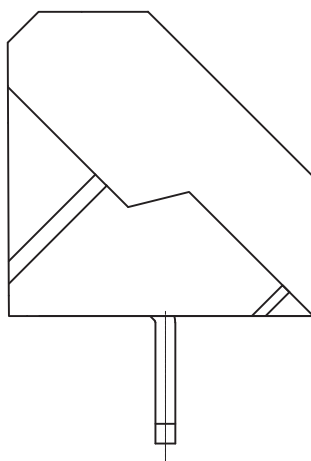
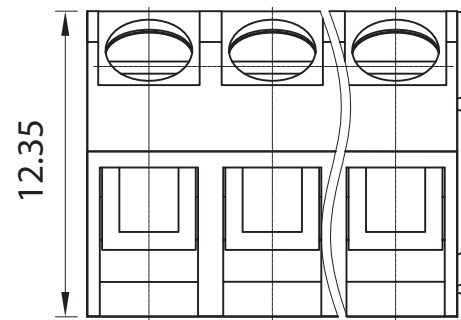


Single deck terminal block - BCEI52-5-A4 Specification



p.c.b. layout



Approvals



15A-300V

Electrical

Rated voltage 250V
 Rated current 18A
 Contact resistance 20mΩ
 Insulation resistance 500MΩ/DC500V
 Withstanding voltage AC2000V/1 min
 Wire range 22-14AWG 1,5mm²

Torque 0,4Nm (3.54Lb. In)
 Temp. Range -40°C+105°C
 Stripping length 4,5mm
 Max sold. time +250°C for 5 sec.

Dimensions

Pitch 5 mm
 Poles 2÷24

Material

Housing PA66 UL94V0
 Pin Copper Alloy, tin plated
 Cage Copper Alloy, Ni plated
 Screws M2,5 Steel, Zn plated
 Side Block
 Nut screw
 Clamp

General description of ordering code

Series	n. Poles	Pitch	Version	Color	Custom
BCEI52	2÷24	-5	-A4		-X

Version Date

2020/01 05/11/2020



Single deck terminal block



UNITS: mm

SHEET SIZE: ISO A4

SCALE: 10:1

> 0 ~ 3

> 3 ~ 18

> 18 ~ 50

> 50 ~ 120

± 0.12

± 0.15

± 0.3

± 0.5



First angle projection

BCEI52-5-A4