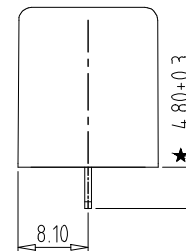
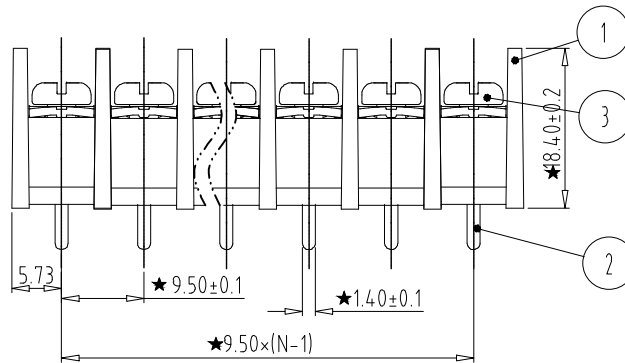
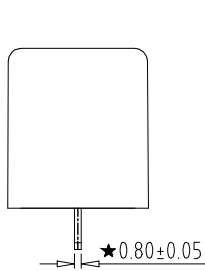
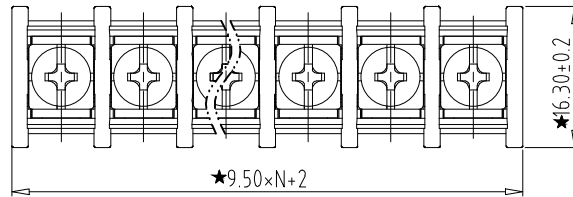


PCB LAYOUT

38720-6903 alternative

Barrier type terminal blocks

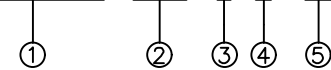


REV	CONTENT	CHK	DATE
V0.0	CONTENT	CXL	20.05.22
V0.1	修正图面	CXL	21.04.26

Electrical :

- 1. Rated Voltage : 300V
- 2. Rated Current : 25A
- 3. Torque Value : M4,10.53Lb.in
- 4. Wire Range : 22-12AWG
- 5. Withstanding Voltage : AC1600V/1Min.
- 6. Operating Temperature : -40°C~+105°C
- 7. RoHS Compliance
- 8. Safty Approval : **UL**
- 9. "★" is the key quality control point.

38720-6903- XXP - X X - 00



- ① Sereies No.
- ② Poles
02 02Contacts
03 03Contacts
...
24 24Contacts
- ③ 1 Single Pitch
2 Double Pitch
- ④ Color: 1 Grey
2 Blue
3 Black
4 Green
5 Orange
6 Red
7 Transparent
8 Yellow
9 White
- ⑤ Customer Request :00--Standard

more info: sales@bec.co.uk

Total Pitch Tolerances in mm										Nominal dimension range in mm										⊥	≡	—	//				
over	over	over	over	over	over	over	over	over	over	over	over	over	over	over	over	over	over	over	over	0	over	0	100	over	0	100	over
to	to	to	to	to	to	to	to	to	to	to	to	to	to	to	to	to	to	to	to	10	all	to	to	150	to	to	150
0	30	53	70	90	115	150	250	350	500	0	30	53	70	90	115	150	200	250	320	0	0.2	0	100	150	0	0.2	0.3
±0.18	±0.20	±0.25	±0.3	±0.35	±0.44	±0.60	±0.70	±0.85	±0.20	±0.25	±0.30	±0.35	±0.44	±0.55	±0.70	±0.80	±0.90	0.2	0.3	0.2	0.3	0.2	0.3	0.5			

3	SCREW	XX	P	Steel	Ni Plated
2	PIN HEADER	XX	P	Brass	Tin Plated
1	HOUSING	XX	1	PA66+GF UL94V-0	SEE NOTE
ITEM	NAME OF PART	NO. OF PART	Q'TY	MATERIAL	NOTE
DWG.	CXL	DATE	20.05.11	SIZE	A4 UNITS mm SHEET/OF 1 / 1
CHK.	DATE			SCALE	1:1
APP.	DATE			NAME	38710-6903 alternative 38720-6903 alternative
					www.bec.co.uk

