

euro-block

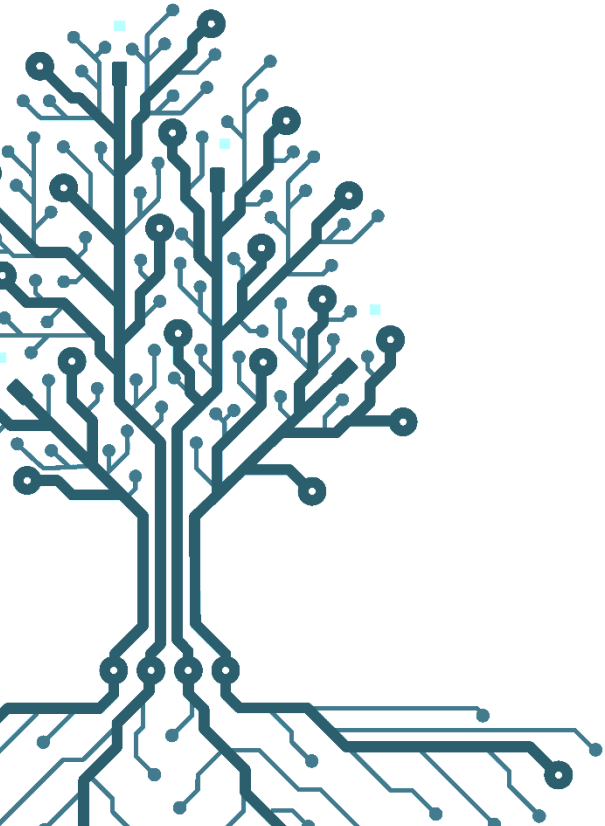
MPM series

KSF

Range improvement:
completion of power terminal blocks

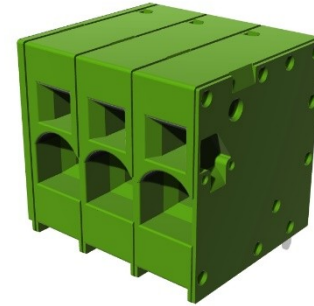
New technology:
first series with spring connection

More options:
different series and alternates to major players

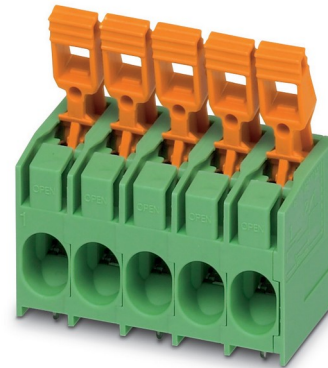


the range

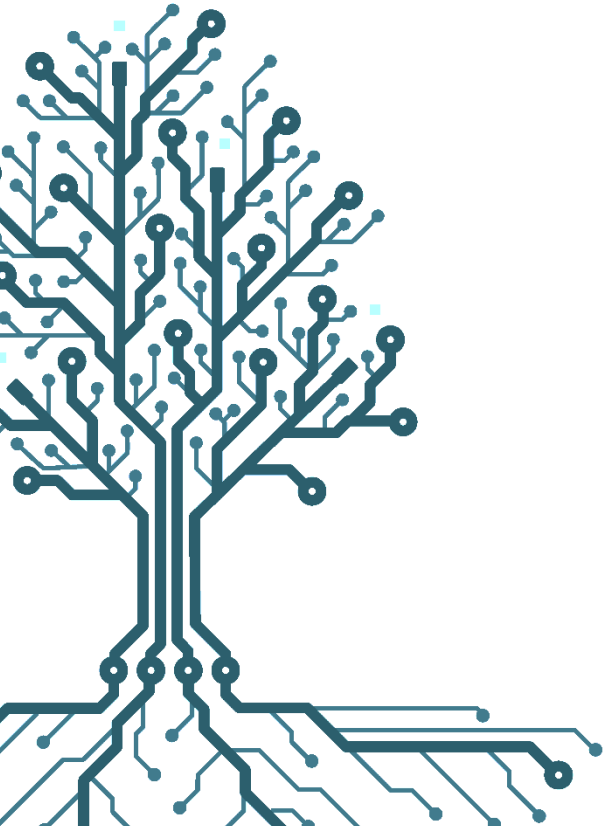
**push in version
series MPM2**



**leverage version
series MPM3**



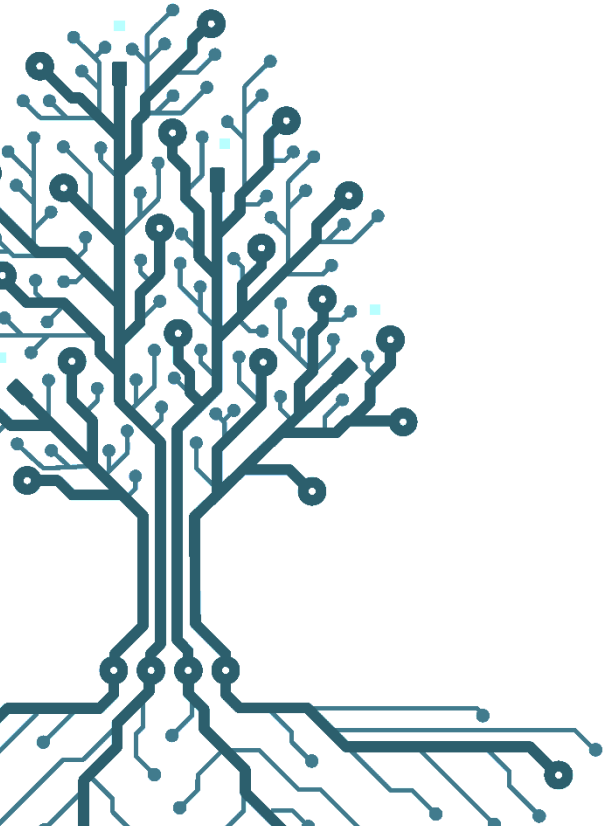
euro-block



MPM2 series



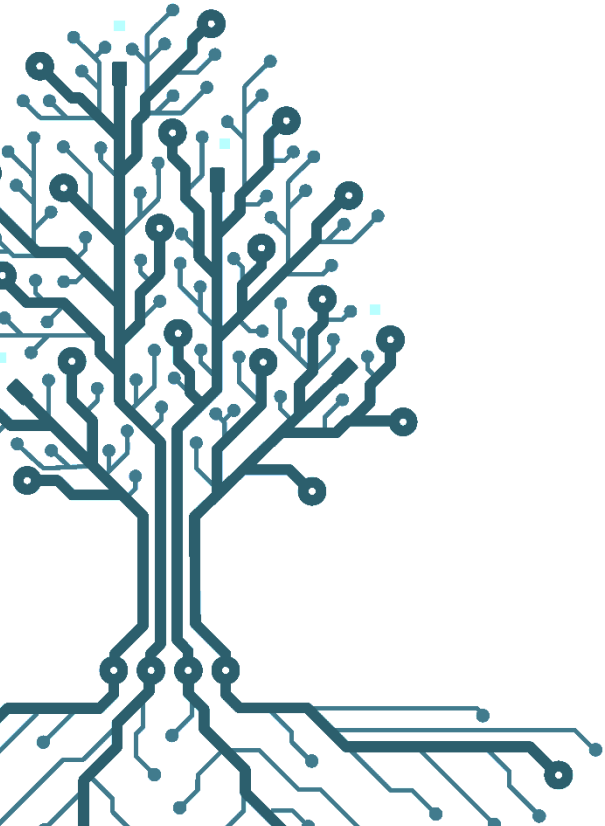
Pitch:	7.5
Versions:	V; H
Ratings:	IEC 41A 800V (alternating pins) 630V (in line pins) UL 40A 600V (alternating pins) 300V (in line pins)
Wire section:	6 mmq - 24-8 AWG
UL:	pending (4 months)



MPM2 series

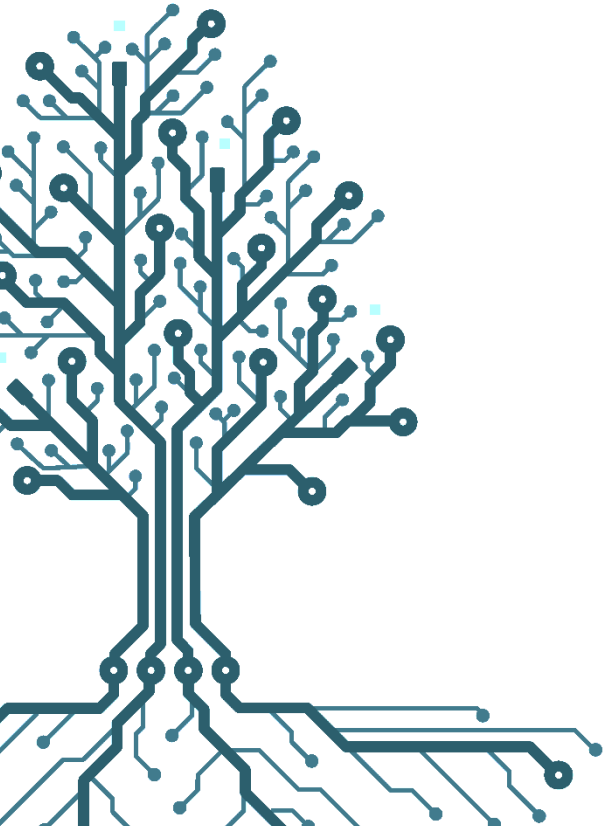


Pitch:	10.00
Versions:	V; H (pin in linea o sfalsati)
Ratings:	IEC 76A 1000V (alternating pins) 1000V (in line pins) UL 66A 600V (alternating pins) 300V (in line pins)
Wire section:	16 mmq – 18-4 AWG
UL:	pending (4 months)



serie MPM3

Pitch:	7,5
Versions:	A; H
Ratings:	IEC 41A 1000V (alternating pins) 500V (in line pins) UL 27A 600V (alternating pins) 300V (in line pins)
Wire section:	6 mmq - 24-10 AWG
UL:	pending (4 months)



MPM3 series

Pitch: 10.00

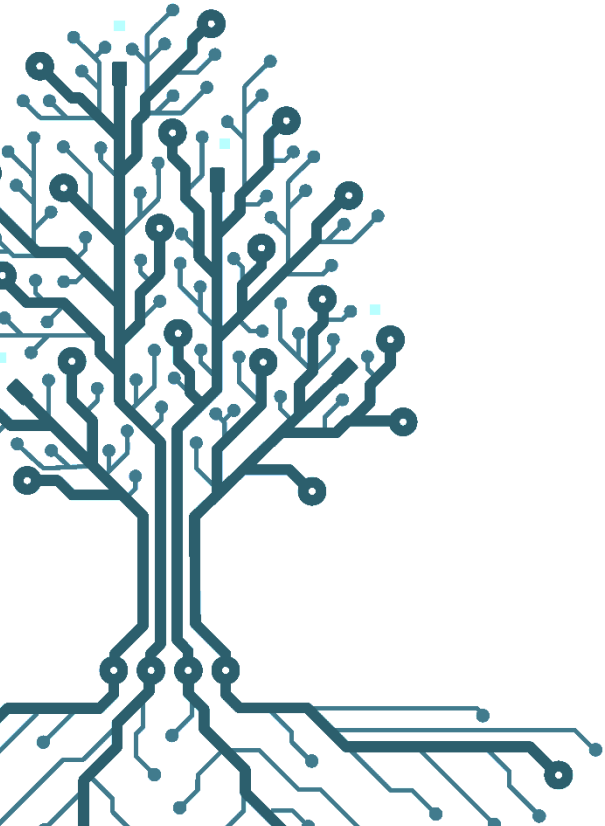
Versions: V; H

Ratings:

IEC 76A	1000V (alternating pins)
	1000V (in line pins)
UL 51A	600V (alternating pins)
	300V (in line pins)

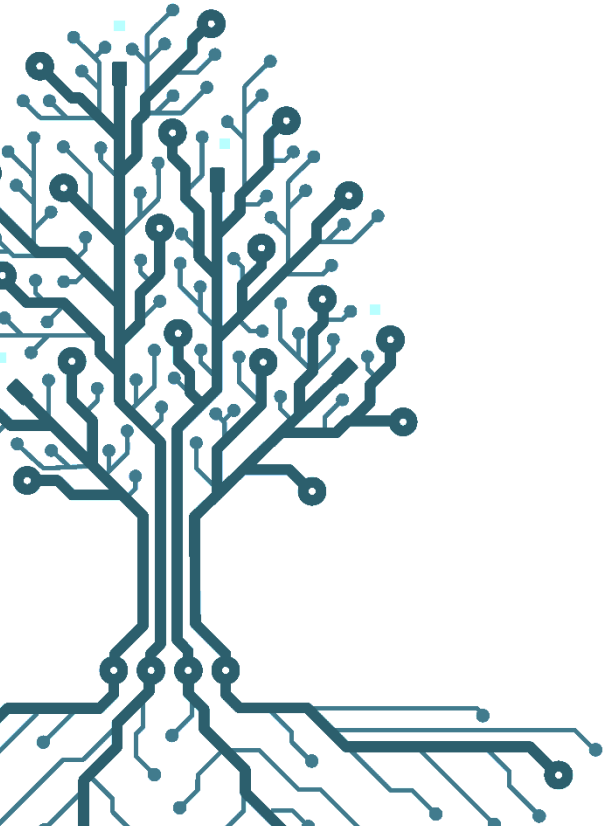
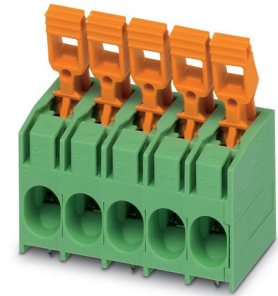
Wire section: 16 mm² – 18-4 AWG

UL: pending (4 months)



MPM3 series

Pitch:	15
Versions:	V; H
Ratings:	IEC 76A 1000V (alternating pins) 1000V (in line pins) UL 51A 600V (alternating pins) 300V (in line pins)
Wire section:	16 mmq – 18-4 AWG
UL:	pending (4 months)



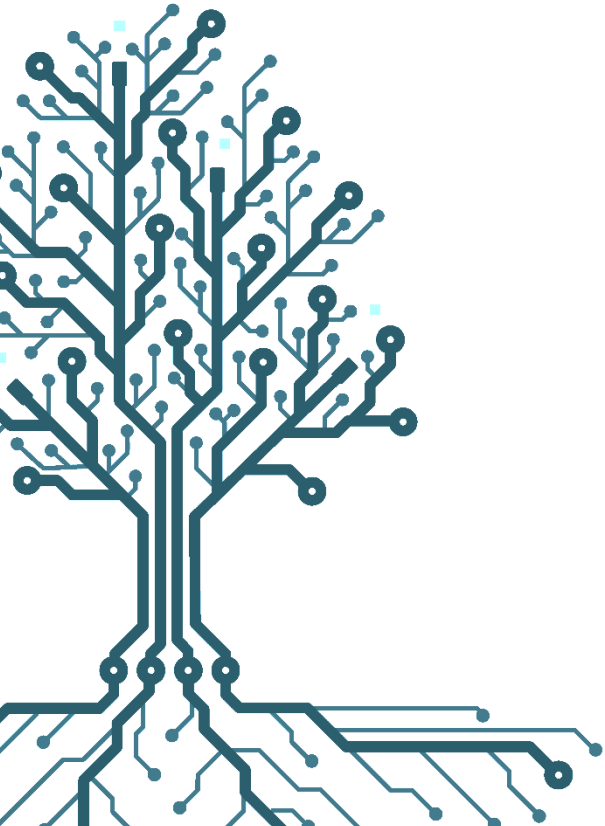
euro-block

Main features

Compatibility with major market players

First series of spring power terminal blocks

Excellent price/quality/service ratio



applications

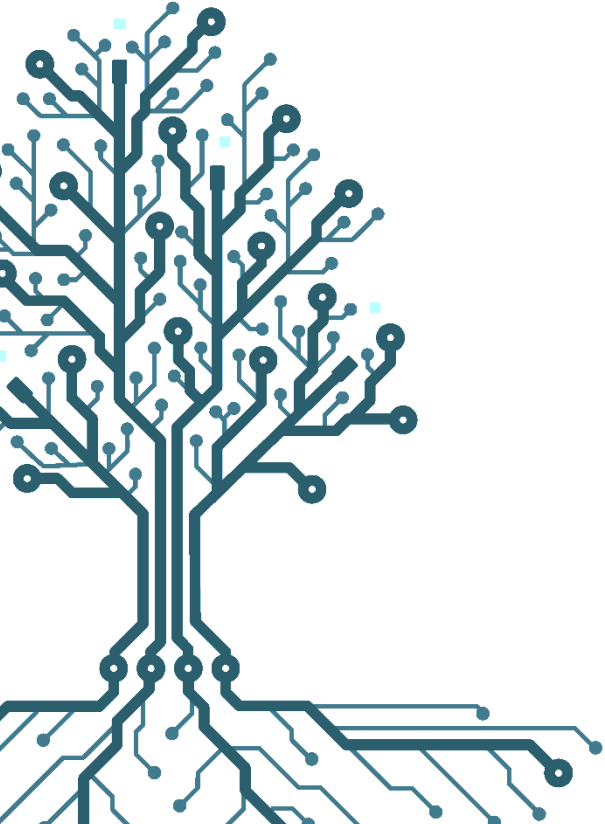
EV chargers

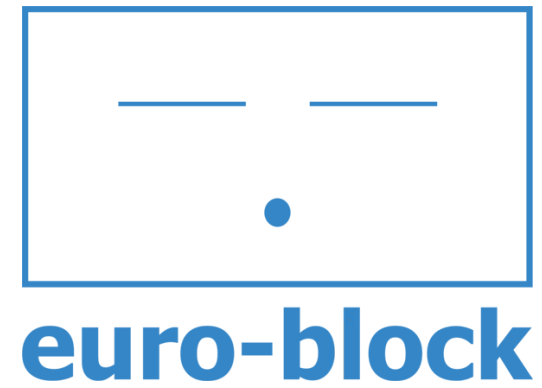
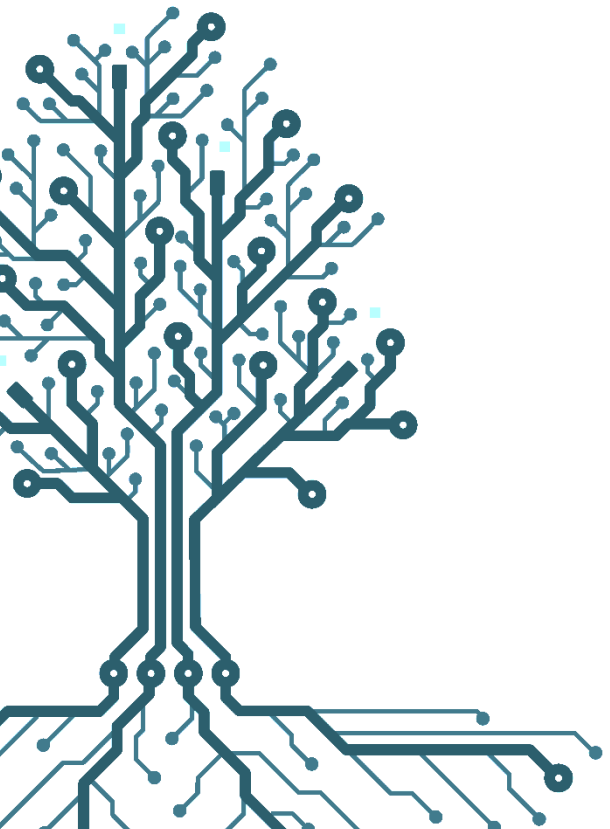
Power supplies

BESS

Power transformers

Power devices with vibrations





thank you !

www.euro-block.it